



GP ACETOXY SILICONE

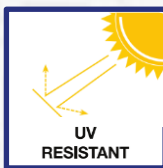
ELASTO[®] Acetoxy is a one-part, medium modulus, anti-fungal, acetoxy curing silicone sealant for general purpose applications. Very good adhesion and assembly of non-porous material, such as glass, metal, tiles, wood, concrete and some plastics. It is especially suitable in applications where there is exposure to humidity, such as kitchens and bathrooms due to its anti-fungal capabilities that prevent the growth of mold on the sealant.

Approvals



Features

- Acetoxy Curing
- Medium Modulus
- Anti-fungal
- Good adhesion
- Resistant to ozone, ultraviolet radiation and temperature extremes

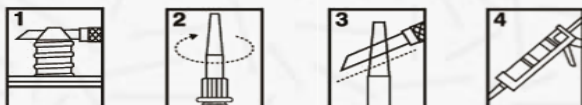


Surface Preparation

Surfaces must be clean, dry and free from grease, dust and frost. In case of renovation work, old sealant as well as old paint must be removed completely. Surface should be cleaned with a suitable solvent for the substrate such as ELASTO® Silicone Cleaner, isopropanol etc.

Instructions

This sealant is ready to use. After suitable joint preparation and masking with a general-purpose masking tape such as Elasto®, the sealant is gunned into place and tooled within 5 minutes, using a spatula which has been dipped in soapy water. Remove masking tape immediately after tooling. If necessary, clean uncured material using an approved sealant remover. For removal of cured material, abrasion or other mechanical means may be needed.



Technical Data

Property	Unit	Value
Specific gravity at 23 °C	g/ml	0.97-0.98
Extrusion	g/min	850
Tack-free time at 23°C	Min	35
Cure rate (23°C, 50% R.H.)		
1 day	mm	1.5
3 days	mm	4

Priming

This product features adhesion to a variety of non-porous substrates; however, for specific substrates, priming may be necessary to improve adhesion. Please consult our Technical Service Department.

Limitations

ELASTO® Acetoxy Silicone should not be applied to mirrors. Use ELASTO® Neutral Silicone instead.

Shelf Life

12 months from date of production, when stored at or below 25°C in the original unopened container

Packaging

- 280 / 300 mL cartridge

Standard Colors

