



## TILES SEALANT

**DYNA-PRO® Tiles Sealant** is a one-part, non-corrosive, mildew resistant, neutral curing silicone sealant. It is especially formulated for applications requiring high elasticity, UV resistance and resistance to temperature extremes. Most common applications include sealing of joints in external wall and floor coverings of ceramic and marble tiles, the sealing of light-colored natural stone and the sealing of expansion joints in swimming pools.

### Approvals



## Features

- Excellent adhesion on marble, granite, quartz and most other types of building substrates (glass, ceramic, aluminum, concrete, stainless steel PVC etc)
- Exceptional UV resistance
- Excellent resistance to movement
- Anti-mold
- Ageing and moisture Resistance

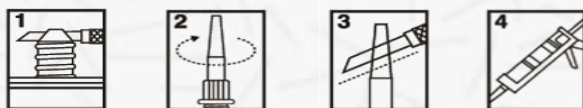


## Surface Preparation

Surfaces must be clean, dry and free from grease, dust and frost. In case of renovation work, old sealant as well as old paint must be removed completely. Surface should be cleaned with a suitable solvent for the substrate such as DYNA-PRO® Silicone Cleaner, isopropanol etc.

## Instructions

This sealant is ready to use. After suitable joint preparation and masking using Dyna-Pro® All-purpose white masking tape, the sealant is gunned into place and tooled within 5 minutes, using a spatula dipped in soapy water. Masking tape is then removed immediately. If necessary, clean uncured material using an approved sealant remover or other suitable solvent. For removal of cured sealant, abrasion or other mechanical means may be needed. Do not expose the sealant to water for at least 24 hours.



*The information is offered in good faith and is believed to be accurate. It should not however be used in substitution for customer's tests to ensure that DYNA-PRO® products are safe, effective and compatible for the intended use. Sole warranty is that the product will meet the DYNA-PRO® sales specifications in effect at the time of delivery. Your exclusive remedy for breach of such warranty is limited to refund of purchase price or replacement of any product shown to be other than as warranted.*

## Technical Data

Property	Unit	Value
Flow Mil S8802 Jig	Inch	0.00
Extrusion Rate	g/min	324
Tensile strength at break	Psi	166
Elongation at break	%	466
Tack-Free Time	Min	24

## Priming

This product features adhesion to a variety of non-porous substrates. No priming is necessary when used with glass. However, for specific substrates, priming may be necessary to improve adhesion. Consult our technical service department.

## Shelf Life

12 months from date of production, when stored at or below 30°C in the original unopened container

## Packaging

- 300 mL cartridge

## Standard Colors

Upon Request. All colors can be matched

