



DUCT SEALANT

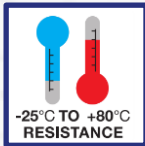
Superior interior/exterior mono-component acrylic sealant for sealing and adhesion options in air-conditioning systems. **DYNA-PRO® Duct** is paintable, flexible and easy to apply. It is slump resistant and exhibits excellent adhesion to galvanized aluminum and mild steel.

Approvals



Features

- Excellent weather and UV resistance
- Low water vapor
- Permanently elastic
- Good water resistance in humid environments.
- Strong bond to galvanized aluminum, mild steel metal ducts.
- Anti-mold and aging resistant.
- Movement of up to 15%
- Indoor & Outdoor Use
- Paintable after 3-hours
- Solvent Free (water-based)
- Low environmental hazard.

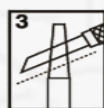
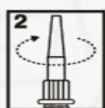


Surface Preparation

Surfaces must be clean, dry and free of grease, dust and frost. In case of renovation work, old sealant as well as old paint must be removed completely.

Instructions

Cut the nozzle at an angle and apply the sealant. Once the sealant is applied, the surface should be firmly pressed together to ensure an airtight seal is achieved. When tooling is necessary, it should be carried out within 10 minutes of application for proper contact of sealant to substrate. Application of the sealant during extreme temperature variations should be avoided.



The information is offered in good faith and is believed to be accurate. It should not however be used in substitution for customer's tests to ensure that DYNA-PRO® products are safe, effective and compatible for the intended use. Sole warranty is that the product will meet the DYNA-PRO® sales specifications in effect at the time of delivery. Your exclusive remedy for breach of such warranty is limited to refund of purchase price or replacement of any product shown to be other than as warranted.

Technical Data

Property	Unit	Value
Cure System		Acrylic Cross Linking
Density	g/cm ³	1.55
Slump	mm	< 2
Penetration	mm	210
Hardness (Shore A)		30
Application Temperature	° C	+5 to +40
Temperature Resistance	° C	-25 to +80
Skin-over time (20°C, 50% R.H.)	Min	15
Movement Capability	%	15
Volatile Organic compound	g/liter	0.045

Shelf Life

12 months from date of production, when stored at or below 30°C in the original unopened container

Packaging

- 280 / 300 mL cartridge
- 5 L pale

Standard Colors

