



BATH & KITCHEN SILICONE

Superior interior/external one-part medium modulus moisture curing silicone sealant. **DYNA-PRO® Bath & Kitchen** is fungus and mildew resistant and therefore especially suitable in sanitary applications and where mildew resistance is required. It exhibits excellent resistance to aging, shrinkage, moisture, cracking and discoloring. It is free of solvents.

Approvals



Features

- Fungus and mildew resistant
- 100% silicone polymer
- Excellent elasticity
- Solvent-free
- Excellent resistance to shrinkage, cracking and discoloring
- Resistant to aging, ultra-violet radiation and temperature extremes



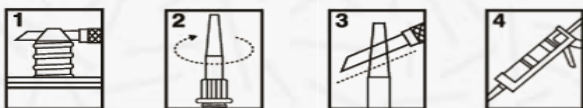
Surface Preparation

Surfaces must be clean, dry and free from grease, dust and frost. In case of renovation work, old sealant as well as old paint must be removed completely. Surface should be cleaned with a suitable solvent for the substrate such DYNA-PRO® Silicone Cleaner, isopropanol etc.

Instructions

This sealant is ready to use. After suitable joint preparation and masking using Dyna-Pro® All-purpose masking tape, the sealant is gunned into place and tooled within 5 minutes, using a spatula dipped in soapy water. Masking tape is then removed immediately. If necessary, clean uncured material using an approved sealant remover or other suitable solvent. For removal of cured sealant, abrasion or other mechanical means may be needed.

Do not expose the sealant to water for at least 24 hours.



Technical Data

Property	Unit	Value
Skin over time	Min	12
Extrusion rate 20°C 6.2Kg/cm2	g/min	223
Durometer Shore A, 3d/RT		>= 18
Tensile 3d/RT	MPa	>= 1.55
Elongation 3d/RT	%	>= 450

Priming

This product features adhesion to a variety of non-porous substrates; however, for specific substrates, priming may be necessary to improve adhesion. Please consult our Technical Service Department.

Shelf Life

12 months from date of production, when stored at or below 30°C in the original unopened container

Packaging

- 280 / 300 mL cartridge
- 85 g tube

Standard Colors

