



DYNA-FIX®

www.saberindustrial.com - sales@saberindustrial.com - +961-9-546 540



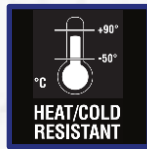
REUSABLE PU FOAM

Dyna-Fix® Polyurethane Expanding Foam is a high-quality, one component, self-expanding, ready-to-use polyurethane foam. Suitable for use on all building material for the purpose of bonding, mounting filling, insulating and sealing. Foam expands to fill gaps and cured excess may be cut and sanded. Cured foam is mold proof and paintable. Unique valve system that is non-blocking and re-usable



Features

- Quick and easy to apply
- Excellent adhesion to most building material
- Thermal Insulation
- Acoustical Insulation
- Vibration and shock resistant
- Moisture / Mold resistant
- Ozone friendly (propellants CFC and HCFC free)
- Resistant to temperature extremes -50°C to +90°C
- Ageing Resistant



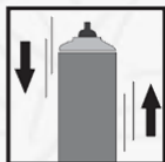
Surface Preparation

Surfaces must be clean, dry and free from grease, dust and frost. In case of renovation work, old sealant as well as old paints must be removed completely. Can should be at room temperature (may be achieved by immersing in warm – NOT hot water).

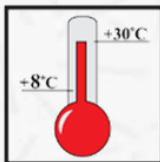
Instructions

Shake the can very well. Remove protective cap, screw on the nozzle. Apply with the can upside down filling 30% – 70% (to allow for expansion). For gaps wider than 5cm, fill gradually by layers. Uncured foam may be cleaned with acetone. Allow to cure. After curing, excess may be removed mechanically, and the cured foam should be protected against UV radiation.

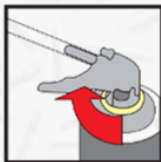
SHAKE CAN WELL APPROX. 20 TIMES BEFORE USE



APPLICATION TEMPERATURE



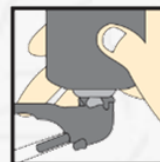
SCREW APPLICATOR NOZZLE ONTO THE VALVE



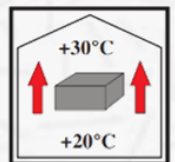
DAMPEN SURFACES



HOLD THE CAN UPSIDE DOWN



STORAGE TEMPERATURE



The information is offered in good faith and is believed to be accurate. It should not however be used in substitution for customer's tests to ensure that DYNA-FIX® products are safe, effective and compatible for the intended use. Sole warranty is that the product will meet the DYNA-FIX® sales specifications in effect at the time of delivery. Your exclusive remedy for breach of such warranty is limited to refund of purchase price or replacement of any product shown to be other than as warranted.

Technical Data

Property	Unit	Value
Density	g/cm ³	0.020 – 0.025
Yield for 750ml	L	Up to 45
Cutting time @23°C to 30°C	Min	35 - 50
Tensile strength	Mpa	0.14
Application Temperature	° C	+8 to +30
Thermal Resistance	° C	-60 to +100
Full cure time	Hrs	24
Tack free time @23°C 50% RH	min	8 – 11
Shrinkage @23°C 50% RH	%	3 – 5

Priming

This product features adhesion to a variety of non-porous substrates; however, for specific substrates, priming may be necessary to improve adhesion. Please consult our Technical Service Department. Surface should be dampened.

Shelf Life

18 months from date of production, when stored at or below 30°C in the original unopened container

Packaging

- 750 mL can

Standard Colors

