



EPOXY ACRYLATE

DYNA-FIX® EPOXY ACRYLATE is a two-component chemical anchoring system which offers excellent adhesion to building material such as **concrete, masonry (solid and hollow), hard natural stone, solid rock, voided stone or rock etc.** It is used in rebar applications, starter bars, crash barriers, masonry support, safety railing and fencing etc...

With superior bond strength compared to its polyester based counterpart, this product is suitable for more demanding applications.

Approvals



The information is offered in good faith and is believed to be accurate. It should not however be used in substitution for customer's tests to ensure that DYNA-FIX® products are safe, effective and compatible for the intended use. Sole warranty is that the product will meet the DYNA-FIX® sales specifications in effect at the time of delivery. Your exclusive remedy for breach of such warranty is limited to refund of purchase price or replacement of any product shown to be other than as warranted.

Features

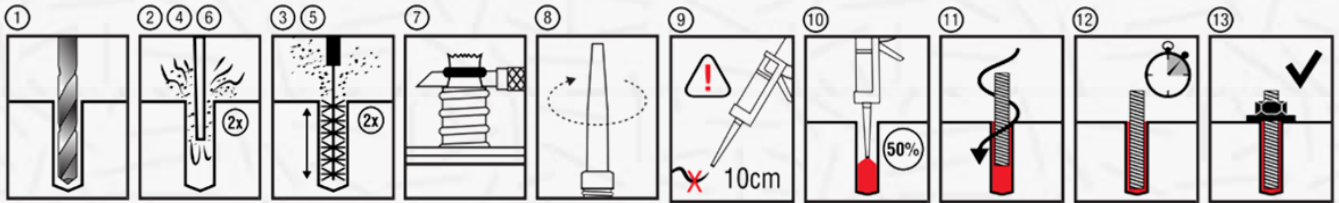
- Applied with standard caulking gun
- Economical injection system (reduced drilling diameter)
- Anchors may be placed close to free edges
- Applied in dry, wet or even flooded conditions with performance uncompromised.
- Variable embedment depths
- Ratio of 10:1



Loading & Curing Times

| Substrate Temperature (° C) | Working Time (Mins) | Loading Time (Mins) |
|-----------------------------|---------------------|---------------------|
| +5 to +10 | 12 | 120 |
| +10 to +20 | 6 | 80 |
| +20 to +25 | 4 | 40 |
| +25 to +30 | 3 | 30 |
| +30 to +35 | 2 | 20 |
| +35 to +40 | 1.5 | 15 |
| +40 | 1.5 | 10 |

Installation Instructions



Installation Parameters

* Design Load equals to Characteristic Load divided by a factor of 1.8

| Anchor Size | Drill Hole Dia. | Embedment Depth (STD.) | Torque Moment | Characteristic Load* |
|-------------|-----------------|------------------------|---------------|----------------------|
| M8 | 10 mm | 80 mm | 10 Nm | 24 kN |
| M10 | 12 mm | 90 mm | 20 Nm | 28 kN |
| M12 | 14 mm | 110 mm | 40 Nm | 49 kN |
| M16 | 18 mm | 128 mm | 80 Nm | 64 kN |
| M20 | 22 mm | 170 mm | 150 Nm | 90 kN |
| M24 | 26 mm | 210 mm | 200 Nm | 118 kN |

Physical Properties

| Property | Unit | Value | Test Standard |
|-----------------------|-------------------|----------------------|-----------------------|
| Density | g/cm ³ | 1.7 | ASTM D 1875 @ +20° C |
| Compressive Strength | 4 hrs | 60 | |
| | 24 hrs | N/mm ² 70 | BS6319 |
| | 7 days | 75 | |
| Compressive E-Modulus | GN/m ² | 3.13 | ASTM D 695 M @ +20° C |
| Tensile Strength | 24 hrs | 11 | |
| | 7 days | N/mm ² 13 | ASTM D 638 @ +20° C |
| Elongation at Break | 24 hrs | 0.09 | |
| | 7 days | % 0.12 | ASTM D 638 @ +20° C |
| Flexural Strength | N/mm ² | 24 | ASTM D 790 @ +20° C |

Shelf Life

12 months from date of production, when stored at or below 25°C in the original unopened container

Packaging

- 300 mL cartridge