



## CRYSTAL ADHESIVE

A single component, moisture curing elastomeric adhesive sealant. It cures to form a strong and flexible and highly resistant joint with excellent adhesion on most substrates. This product contains no isocyanates. **DYNA-FIX® Crystal Adhesive** offers excellent adhesion on common substrates such as glass, lacquered metals, aluminum, ceramic, concrete, wood, plaster, stone, polyester, PVC, PS etc. For indoor bonding, caulking and sealing of façade and for leveling of uneven surfaces.

### Approvals



## Features

- No primer required
- Strong adhesion
- Indoor Use
- No yellowing
- No shrinkage



WEATHER  
RESISTANT



STRONG  
BOND



NON  
STAINABLE



PAINTABLE



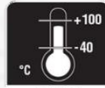
25 KG/CM<sup>2</sup>



MIRROR  
BONDING



REMAINS  
ELASTIC



TEMP  
RESISTANCE

## Surface Preparation

Surfaces must be clean, dry and free from grease, dust, oil and any contaminant possibly harming the bonding. It is recommended to clean the surface with a suitable solvent such as methylethylketone, acetone etc.

## Instructions

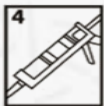
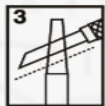
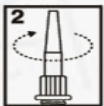
Apply using either a manual or a pneumatic gun with a triangular nozzle.

Once applied, smoothen the joint with a putty knife dipped in soapy water.

Once the cartridge is opened, the product should be used within 24 hours.

Do not apply at temperatures below 5°C.

During curing, contact with non-cured polyurethanes should be avoided.



## Technical Data

Property	Unit	Value
Skin over time (23°C / 50% RH)	Min	10 – 15
Density @ 20°C	g/ml	1.01
Temperature Resistance	°C	-40 to +100
Application Temperature	°C	5 to 40
Shore A Hardness		38
Overall Appearance		Transparent Paste
Elongation at break	%	250
Coloring Resistance		Excellent
Water Resistance		Not to be used in cases of water immersion

## Shelf Life

12 months from date of production, when stored at or below 25°C in the original unopened container

## Packaging

- 300 mL cartridge



## Standard Colors